

True Vision October Recognition



New Manager Step-Ups

Barb Young & Tupper Power

Proudly Developed by Amy Torres

INNOVATION
SUCCESS
EVALUATION
DEVELOPMENT
GROWTH
SOLUTION
PROGRESS
MARKETING





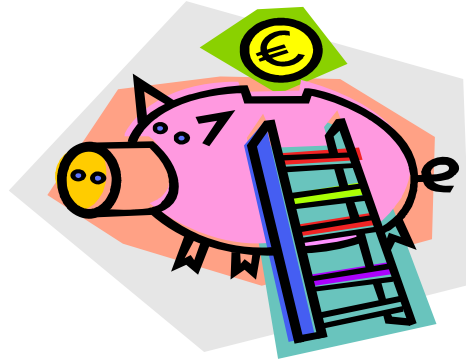
Top Personal Recruiters

#1 Director	Kristy Brandon	3 Recruits
#1 Manager	Dana Kissack	2 Recruits
#1 Manager	Lucia Ruiz	2 Recruits
#1 Consultant	Teresa Bailey	2 Recruits

Tops in Team Recruiting

# 1 Dream Team	10 New Team Members
# 2 Tupperifics	8 New Team Members
# 2 True Believers	8 New Team Members





Top Director in Personal Sales

1 Amy Torres \$3,717 Tupperifics

Top Managers in Personal Sales

1 Dana Kissack \$4,151 Dream Team
2 Cinda Percival \$2,515 Rainbow Connection
3 Gina-Marie Tipton \$2,288 Dream Team
4 Heather Wahls \$2,250 True Believers
5 Jill Giffhorn \$1,451 Tupperifics

Top Consultants in Personal Sales

#1 Wendy Edelman \$3,384 Rainbow Connection
2 Renee Durdan \$ 1,801 Tupperifics
3 Cindy Devore \$ 1,673 Dream Team
4 Jen Fox \$ 1,663 True Believers
5 Barb Young \$ 1,391 Tupperifics
6 Rose Nieto \$ 1,388 Tupperifics
7 Roxy Blunier \$ 1,316 Rainbow Connection
8 Amy Lagergren \$ 1,253 Rainbow Connection
9 Katie Klein \$ 1,250 Tupperifics
#10 Amy Naughton \$ 1,210 Tupperifics

**GREAT
JOB!**

Earners Club Qualifiers

\$500+

Jen Fox	True Believers
Jill Giffhorn	Tupperifics
Cinda Percival	Rainbow Connection
Gina-Marie Tipton	Dream Team
Renee Durdan	Tupperifics
Cindy Devore	Dream Team
Nicole Van Gilder	Dream Team

\$1,000+

Bethany Busboom	Drastic Plastic
*Wendy Edelman	Rainbow Connection

\$1,500+

Jenni Decker-Shelton	Rainbow Connection
*Dana Kissack	Dream Team

\$2,500+

Kristy Brandon	True Believers
----------------	----------------

\$4,000+

*Amy Torres	Tupperifics
-------------	-------------

****Congratulations***

to our Top Earners for October!

Congratulations!!!



Top Manager Teams

# 1 Dream Achievers	\$ 9,001	Dana Kissack, SM
# 2 Pot of Gold	\$ 4,537	Cinda Percival, M
# 3 The Perfect Fit	\$ 4,242	Gina-Marie Tipton, SM
# 4 Unbreakabowls	\$ 3,264	Jill Giffhorn, M
# 5 Tupperholics	\$ 3,233	Nicole Van Gilder, M

Director Team Totals

# 1 Dream Team	\$30,442	Donna Aleksy
Tupperifics	\$ 22,462	Amy Torres
Rainbow Connection	\$ 14,935	Jenni Decker-Shelton
True Believers	\$ 13,526	Kristy Brandon



Organizational Totals for October

True Vision Enterprise
\$ 89,301

Rainbow Connection & Co.
\$28,461

True Believers & Co.
\$21,313